

# OPEN FARM HOUSE



*Events, Retreats & Weddings*



## Origin

For over 40 years, our mission has been to farm responsibly, sell pure farm fresh products, provide events celebrating the cycle of the New England farm year and offer opportunities for engagement with the land.

# Location

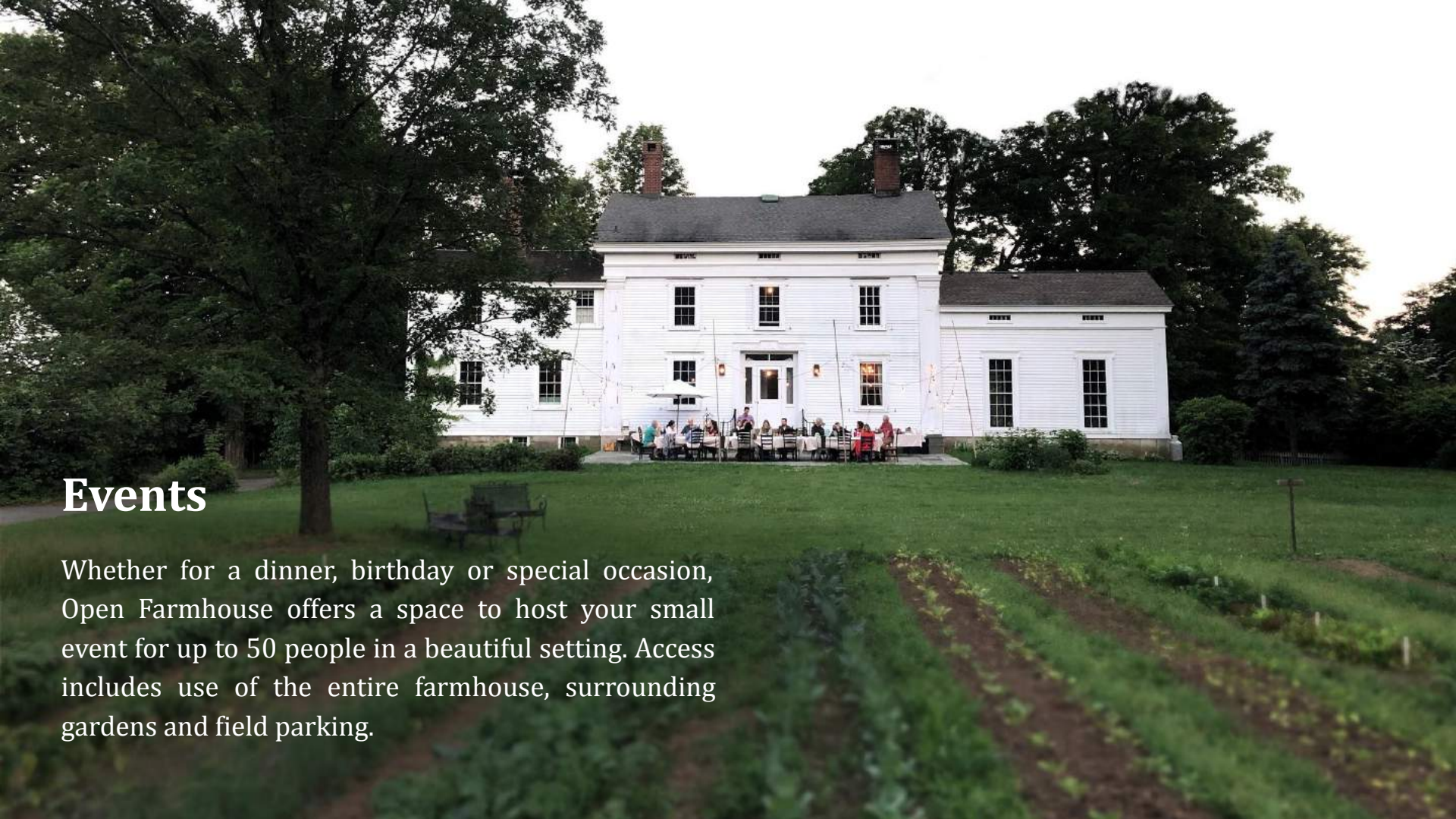
Open Farmhouse is located on 300 acres of protected land in Redding, Connecticut. Just an hour and a half drive from New York City, it's easily accessible by car or short shuttle from Metro North. As part of a working farm, guests may experience farm fresh produce, bucolic views and engagement with the land.



# Stay

Five private bedrooms provide a good night's sleep, with simple furnishings and comfortable mattresses. Three shared bathrooms allow everyone to get ready for the day. All linens and towels provided.





## Events

Whether for a dinner, birthday or special occasion, Open Farmhouse offers a space to host your small event for up to 50 people in a beautiful setting. Access includes use of the entire farmhouse, surrounding gardens and field parking.



## Retreats

Gather for a peaceful retreat. Use the ballroom for yoga and meditation, the walking paths for contemplation, and fresh vegetables for your meals.



## **Micro Weddings**

Celebrate your special day with a beautiful ceremony in the field and gather with friends and family for a reception in the house or backyard. The farmhouse can accommodate 10 overnight guests and up to 50 for your ceremony and reception.

# Film and Photo Shoots

The ideal location for small productions that capture the essence of rural New England. Use the 1840's farmhouse as the setting for your historic film or utilize the surrounding fields for a creative music video.

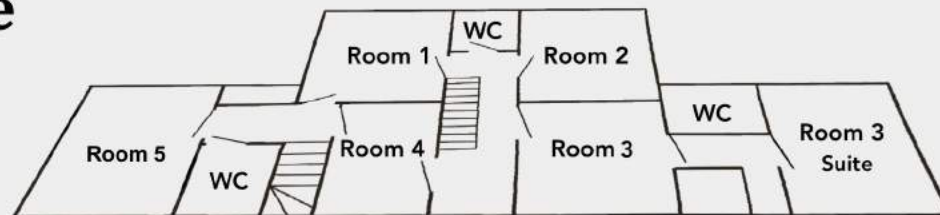




# The Farmhouse

## Second Floor

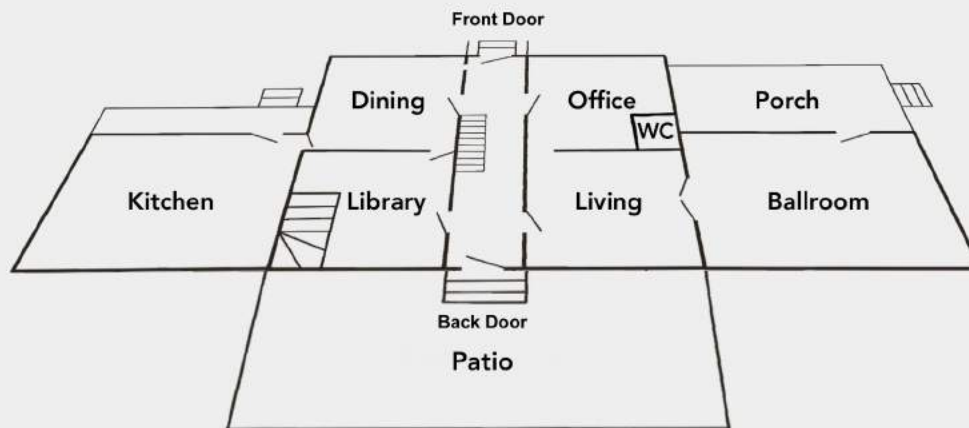
1500 sq ft



## First Floor

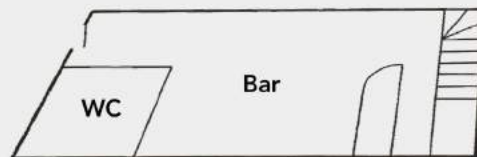
1500 sq ft

Patio 1000 sq ft  
(24 ft x 42 ft)



## Cellar

500 sq ft



## Rental Includes:

We offer a beautiful space for your event, retreat, micro wedding or film shoot which includes access for up to 50 guests and;

- The historic 1840's farmhouse
- Overnight lodging for up to 11 guests
- Lawn and flower gardens
- Kitchen garden for seasonal fresh vegetables
- Indoor and outdoor areas for photos
- Ceremony seating for up to 50 guests
- Dining tables and chairs for up to 50 guests on patio
- Ballroom for yoga, meditation, photos and dancing
- Farmstand in side field for welcome area
- Parking in side field for 50 cars
- Bathrooms in house
- Electrical power and water in and around house
- Fully equipped kitchen for catering use

## Suggested Vendors

We do not provide the below services and you may want to consider hiring local vendors:

- Tent
- Florals
- Catering or food truck
- Photographer
- Acoustic band
- Event planner

## Please

- No pets
- No DJs or loud music
- No illegal drugs
- No smoking, vaping or incense
- No weapons

# Pricing

**Pricing varies, please fill out our Event Request Form for an estimate.**

## **Events**

Dinner, Birthday, Reunion, Graduation, Retirement, etc

Includes 1 hr site visit and overnight stay for 11 guests

Length: 5 hr +

**Starting at \$1,000 for a 5 hr rental or \$1,500 per night**

## **Retreats**

Wellness, Yoga, Meditation, Writing, Team Retreats, etc

Includes 1 hour site visit and overnight stay for 11 guests

Length: 2 hr +

**Starting at \$200 for a 2 hr rental or \$1,500 per night**

## **Micro Weddings**

Ceremony, Reception, Rehearsal Dinner, Photography

Includes 2 hr site visit and overnight stay for 11 guests

Length: 1 day +

**Starting at \$3,000 for 20 people or \$6,000 for 50 people**

## **Film And Photo Shoots**

Small film productions, commercial photo shoots, engagement photos, etc

Includes 1 hour site visit

Length: 2 hr +

**Starting at \$200 for a 2 hr rental or \$1,500 per day**

**[Please click here or go to \[openfarmhouse.com/book\]\(https://openfarmhouse.com/book\) and submit the Event Request Form](#)**

A background image of a field with numerous pink flowers, likely asters, in various stages of bloom. The flowers are scattered across the frame, with some in sharp focus in the foreground and others blurred in the background. The overall scene is a lush, green field with vibrant pink blossoms.

Thank you for considering Open Farmhouse!

Please email us if you have additional questions:  
[info@openfarmhouse.com](mailto:info@openfarmhouse.com)